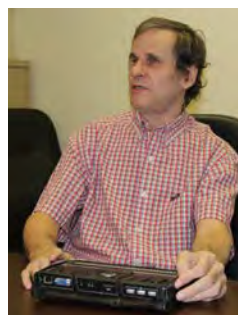


# Oklahoma ABLE Tech

Assistive Technology Act Program  
for the State of Oklahoma

## CONNECTING OKLAHOMANS WITH DISABILITIES TO ASSISTIVE TECHNOLOGY



Assistive Technology Act Program  
for the State of Oklahoma

## ABOUT US

Oklahoma ABLE Tech is the statewide Assistive Technology Act Program proudly located at Oklahoma State University in Stillwater, Oklahoma. ABLE Tech is funded through the [Administration for Community Living of the U.S. Department of Health and Human Services](#), which is made possible through the Assistive Technology Act of 1998 as amended in 2004 (ATA 2004).

ABLE Tech's **mission** is to improve access to and acquisition of assistive technology (AT) for individuals with disabilities of all ages. ABLE Tech provides AT through comprehensive statewide programs and services, which include:

- Device Demonstrations
- Device Short-Term Loans
- Device Reutilization
- Financial Loans for AT and Employment



### *What is Assistive Technology?*

*Assistive Technology (AT) is any item, device, or piece of equipment used to maintain or improve a person's capabilities, allowing them to function independently in recreation, education, employment, and daily living activities.*

ASSISTIVE TECHNOLOGY  
IS REDEFINING  
WHAT IS POSSIBLE.

# STATE LEADERSHIP ACTIVITIES

## Training and technical assistance

Oklahoma ABLE Tech provides support to public and private entities that serve individuals with disabilities through training sessions and technical assistance. State and local agencies include early intervention programs, public education agencies, adult service programs, health care facilities, institutions of higher education, and businesses. Training topics include:

- AT skills-development training
- Use and application training
- Assessment and implementation training
- Technical integration training
- Transition assistance to individuals with disabilities

## Public awareness

ABLE Tech conducts public awareness activities to provide information to targeted individuals and entities relating to the availability, benefits, appropriateness, and costs of assistive technology devices and assistive technology services. ABLE Tech provides a statewide information and referral system through a toll free phone number (800.257.1705) to help answer questions from individuals with disabilities, family members, and service providers.

## Coordination and collaboration

ABLE Tech coordinates activities among public and private entities that are responsible for policies, procedures, or funding for the provision of assistive technology devices and services for individuals with disabilities of all ages in the State.

## ● DEVICE DEMONSTRATIONS

ABLE Tech and its statewide partners operate assistive technology centers and a device demonstration program to increase access to and utilization of AT. Demonstrations give individuals the opportunity to see, touch, and try AT devices to help them in the decision-making process.

### Demonstrations provide

- Hands-on exploration of AT
- Information on the latest technology
- Low-tech solutions and adaptations
- Vendor sources

### WHO BENEFITS FROM AT CENTERS?

**People with Disabilities**

**Family Members**

**Service Providers**

**Advocates**

**Educators**



*This deaf and blind 2-year-old with global motor impairments received early intervention services from SoonerStart. His team suggested a Koosh switch that is connected to a switch-activated robot toy. He is now able to play independently and is exploring other cause and effect toys.*

## ● DEVICE SHORT-TERM LOANS

ABLE Tech's device short-term loan program provides Oklahomans the opportunity to borrow assistive technology devices to:

- Make an informed decision before purchase
- Ensure compatibility between the device and user
- Have back-up equipment while waiting for repair
- Have a device while waiting for new equipment

The short-term loan program is available to any Oklahoma resident. Loan duration is from two to six weeks, is easy-to-use and free; devices are shipped statewide.

Our inventory offers a wide range of AT devices, including equipment for communication, computer access, hearing, vision, daily living, environmental adaptations, learning and development, health, safety, and recreation.

ABLE Tech's staff can also provide guidance on funding resources to help obtain needed AT.

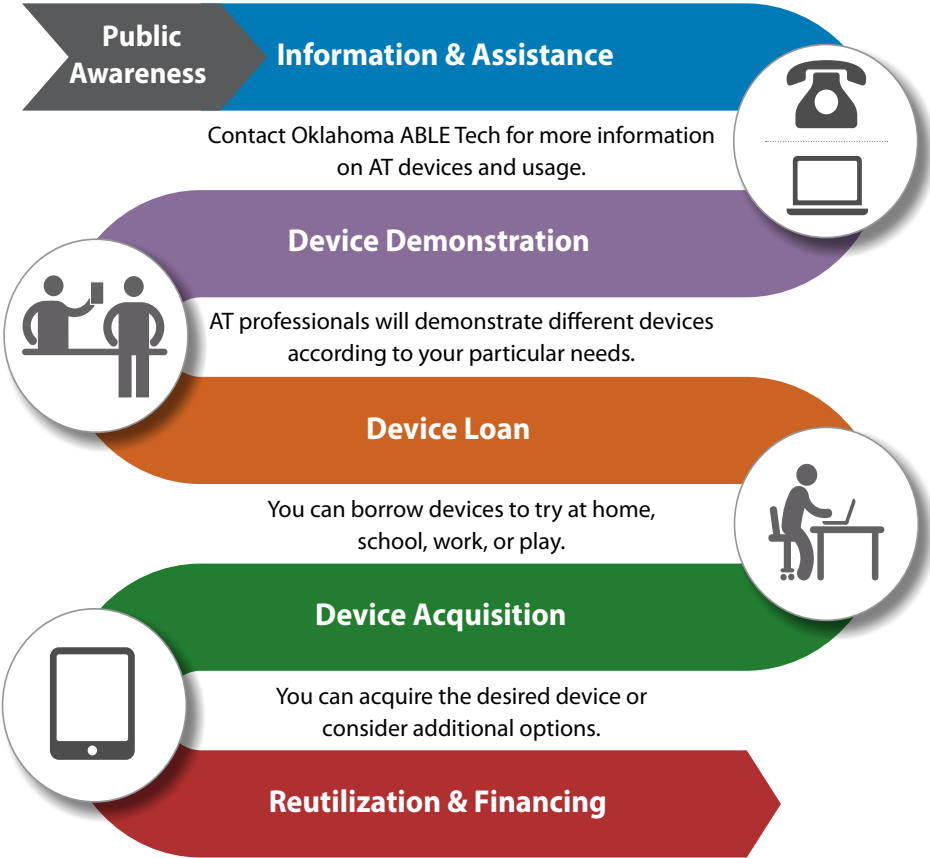
To view ABLE Tech's loan inventory, visit: [at.okstate.edu](http://at.okstate.edu)

*This young lady was able to receive an iPad for daily use, and a mounting device for her power wheelchair. She can now use her iPad independently when it is positioned on the mount, and she is looking forward to using it for school.*



# ● ASSISTIVE TECHNOLOGY SERVICES FLOW CHART

How do you acquire information about assistive technology devices for yourself, family members, or clients to enhance life, work, and play?



**\*Some devices may be acquired at little or no cost.**

For others, financing through Oklahoma ABLE Tech Financial Loan Program is available. Contact ABLE Tech to learn about all your device options.



*Adapted from original Assistive Technology Services Flow Chart by Wyoming Assistive Technology Resources.*

# FINANCIAL LOANS FOR OKLAHOMANS

## Should I apply?

### I can't qualify for a financial loan because I had to file bankruptcy due to medical expenses.

A bankruptcy due to medical-related expenses will not necessarily disqualify you from the program. Our non-profit partner will review your application for special guaranty consideration. Applicants are reviewed on a case-by-case basis to determine the ability to make monthly loan payments based on income and monthly expenses.

### My insurance out-of-pocket / co-pay for my prescribed durable medical equipment is more than I can afford.

This loan can assist with medical co-pays and/or deductibles for equipment that is considered assistive technology. A quote or invoice for your portion of the cost is required with your application; if approved, payment will be made to the vendor.

### I need a modified vehicle and don't know what my options are.

This loan can be used to purchase a new or used modified vehicle or to acquire funding to modify your current vehicle. It may also be used to fill the gap with other public or private funding sources, such as the Department of Rehabilitation Services or Developmental Disability Services.

## Success Stories

### Lola of Madill, OK

Lola used the financial loan program to purchase hearing aids for herself. She had been considering the needed purchase for about three months when she learned about the ABLE Tech program from the audiologist. She qualified for the non-guaranteed low interest bank loan without assistance.

**Outcome:** She is deaf in her right ear, and now can hear better in everyday life.



### Janice of Oklahoma City, OK

Janice used the financial loan program to purchase a hydraulic lift for her vehicle in order to transport her wheelchair. She had some options, but chose the low interest bank loan because it made the lift affordable with monthly payments.

**Outcome:** Janice had been debating about making this purchase for several months; she says, "It gave me the ability to leave my home as I can now transport my wheelchair!"





# ● FINANCIAL LOANS FOR OKLAHOMANS

## Financial Loans for Assistive Technology

Oklahoma ABLE Tech, in partnership with the Oklahoma Assistive Technology Foundation (OkAT) and BancFirst of Stillwater, can provide financing options for Oklahomans to purchase assistive technology to help them live, work, and learn independently.

### Qualifying purchases for the loan:

- Vision equipment and glasses
- Hearing equipment
- Mobility devices
- Vehicle modifications
- Daily living aids
- Durable medical equipment
- Communication devices
- iPad for specialized use, or
- Any device used as assistive technology



### Loan Features

- Fixed low interest rate for the life of the loan.
- Easy, flexible repayment terms.
- Can be used to cover co-pays.
- Payment made directly to the vendor.
- Special qualifying terms for applicants who have limited income due to a disability related circumstance.





## ● FINANCIAL LOANS FOR OKLAHOMANS

ABLE Tech, OkAT and BancFirst, together, are able to provide a variety of lending products to meet the consumer's needs.

For lower dollar amount loans, ABLE Tech processes applications in-house and refers to these as Direct Loans.

Direct Loan with ABLE Tech/OkAT		
Loan Amount	Term of Loan	Approximate Monthly Payment
\$1,500	12 Months	\$128
\$2,000	24 Months	\$110
\$4,000	36 Months	\$120

BancFirst partners with ABLE Tech and OkAT to manage loans of higher dollar value that can be broken down into Secured or Unsecured loans.

Secured and Unsecured Loan with BancFirst		
Loan Amount	Term of Loan	Approximate Monthly Payment
\$10,000	36 Months	\$300 - \$305
\$15,000	48 Months	\$345 - \$353
\$20,000	60 Months	\$377 - \$387

### How do I apply?

Download and complete the Financial Loan Application (<http://bit.ly/abt-loan>) on our website. If you need assistance or have questions, please contact:

Shelley Gladden, Loan Coordinator  
 Oklahoma ABLE Tech  
 Oklahoma State University  
 1514 W. Hall of Fame  
 Stillwater, OK 74078



Phone: 800.257.1705 or 405.744.4254  
 Fax: 405.744.2487  
 Email: [shelley.gladden@okstate.edu](mailto:shelley.gladden@okstate.edu)

## ● DEVICE REUTILIZATION

ABLETech and the Oklahoma Health Care Authority have partnered to provide the **Oklahoma Durable Medical Equipment Reuse Program**. The program is designed to reuse valuable durable medical equipment (DME) that is no longer needed, and reassign it to Oklahoma residents in need.

### Program highlights:

- Retrieve donated equipment
- Sanitize and refurbish devices returning DME to peak performance
- DME vendors repair equipment if needed to ensure quality
- Reassign DME to the best matched eligible client at no cost



### What type of DME is available?

- Bath benches
- Blood pressure monitors
- Commodes
- CPAPs
- Gait trainers
- Hospital beds for in-home use
- Knee walkers
- Nebulizers
- Patient lifts
- Quad canes
- Rollator Walkers
- Scooters
- Shower chairs
- Standers
- Walkers
- Wheelchairs (manual & motorized)



*A young boy received a wheelchair from OKDMERP. His wheelchair has added greater mobility to his daily life and allows him to have more involvement and interaction with his brothers and sisters.*

[okabletech.org/okdmerp](http://okabletech.org/okdmerp)

800.257.1705 (v/tty) or 405.523.4810

**Do you have assistive technology you don't use?**

**Do you need an AT device you cannot afford?**

The **Oklahoma Equipment Exchange** can help you donate, sell, or locate equipment for a reasonable price. The program is a person-to-person exchange, which functions like the newspaper classifieds and provides listings of pre-owned equipment.

To access this free service, visit the Equipment Exchange online ([oe.okstate.edu](http://oe.okstate.edu)). Don't have computer access? Call us - we would be happy to post a listing or search a product for you!



*This 91 year old woman was rarely getting out of bed as it was too difficult to get in and out of a chair. Lift chairs are in high demand. However, OEE had one available at the time of the phone call, creating a perfect match for her. She is now able to get out of her bedroom and be with her family.*

[oe.okstate.edu](http://oe.okstate.edu)

800.257.1705 (v/tty) or 405.744.9748

## FUNDING PARTNERS

ABLE Tech is funded through the **Administration for Community Living of the U.S. Department of Health and Human Services**, and maintains coordination and



collaboration efforts with partners throughout the State of Oklahoma. The funding provided helps enhance the opportunities for Oklahomans with disabilities to access and acquire needed assistive technology.

### Oklahoma ABLE Tech Oklahoma State University Department of Wellness

1514 W. Hall of Fame | Stillwater, OK 74078

Ph: 405.744.9748 | Fax: 405.744.2487

Toll-free: 800.257.1705 (V/TTY)

[www.okabletech.org](http://www.okabletech.org)



DEPARTMENT OF  
Wellness

@ [abletech@okstate.edu](mailto:abletech@okstate.edu)

 [www.YouTube.com/OklahomaABLETech](http://www.YouTube.com/OklahomaABLETech)

**CONNECT WITH US:**

 [www.facebook.com/okabletech](http://www.facebook.com/okabletech)

 [www.twitter.com/okabletech](http://www.twitter.com/okabletech)

 [www.pinterest.com/okabletech](http://www.pinterest.com/okabletech)

The Oklahoma State University Department of Wellness is the lead agency for Oklahoma ABLE Tech. The program is funded by the Administration for Community Living of the U.S. Department of Health and Human Services. This publication does not necessarily reflect the position or policy of ACL, and no official endorsement of the material should be inferred.